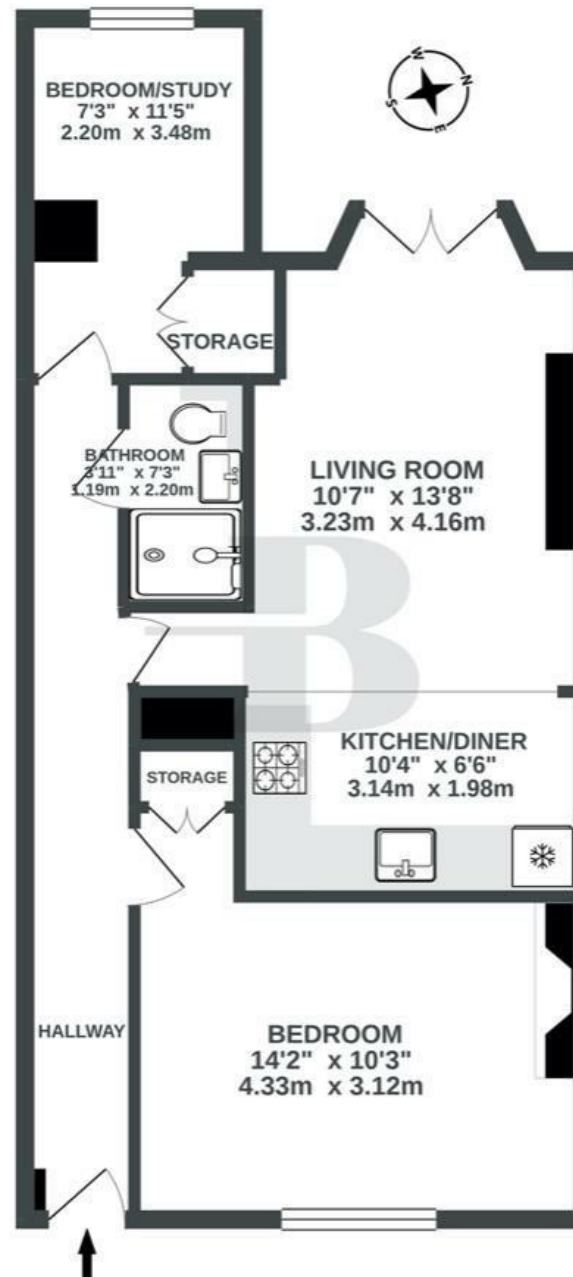


LOWER GROUND FLOOR
580 sq.ft. (53.9 sq.m.) approx.



TOTAL FLOOR AREA : 580 sq.ft. (53.9 sq.m.) approx.

Whilst every attempt has been made to ensure the accuracy of the floorplan contained here, measurements of doors, windows, rooms and any other items are approximate and no responsibility is taken for any error, omission or mis-statement. This plan is for illustrative purposes only and should be used as such by any prospective purchaser. The services, systems and appliances shown have not been tested and no guarantee as to their operability or efficiency can be given.
Made with Metropix ©2021

Boardwalk

Meridian Place

, BRISTOL



£365,000



2 Bedrooms



Bristol, BS8



1 Bathrooms

11G

"It was the garden that did it for us - a quiet green oasis in the middle of the city. It was a little unloved when we first moved in but we poured our hearts into it over the last four years, adding steps, a patio and decking, replacing the lawn, and filling the borders with colourful plants. We think the local wildlife loves it too - we've spotted blue tits, robins, dunnocks, blackbirds, long tailed tits, goldfinches and even woodpeckers in our silver birch. We've been equally attentive to the flat itself, which has been completely redecorated throughout, complete with bedroom mural! We're especially proud of the kitchen/living room, which we moved from the front room to the back. This has really made the most of the space, allowing us to enjoy sun-drenched barbecues and pizza parties with family and friends. The rest of the property is occupied by wonderful neighbours, both renters and owners, some of whom have lived in their flats for a number of years. The area, of course, couldn't be better! Our insider top tips would be brunch at Rosemarino, a stroll along Birdcage Walk, and an afternoon pint at our friendly local, Quinton House."

